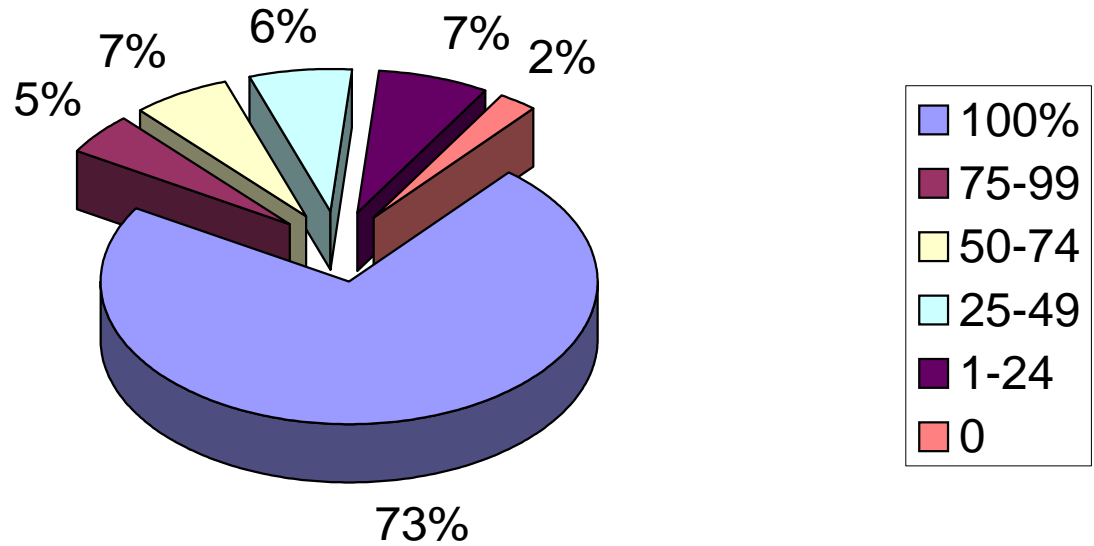


Holston Conference 2005 - Apportionment Percent Paid



% Paid	# of Churches	% of Churches	\$\$ per Group	% of FSA	Unpaid \$\$ FSA
100%	670	72.6%	11,733,647	87.3%	22,712
75-99	43	4.7%	898,142	6.7%	(173,272)
50-74	60	6.5%	484,676	3.6%	(325,062)
25-49	59	6.4%	255,705	1.9%	(456,060)
1-24	68	7.4%	74,075	0.6%	(374,137)
0	23	2.5%	0	0.0%	(69,513)
	923	100.0%	13,446,245	100.0%	(1,375,332)

